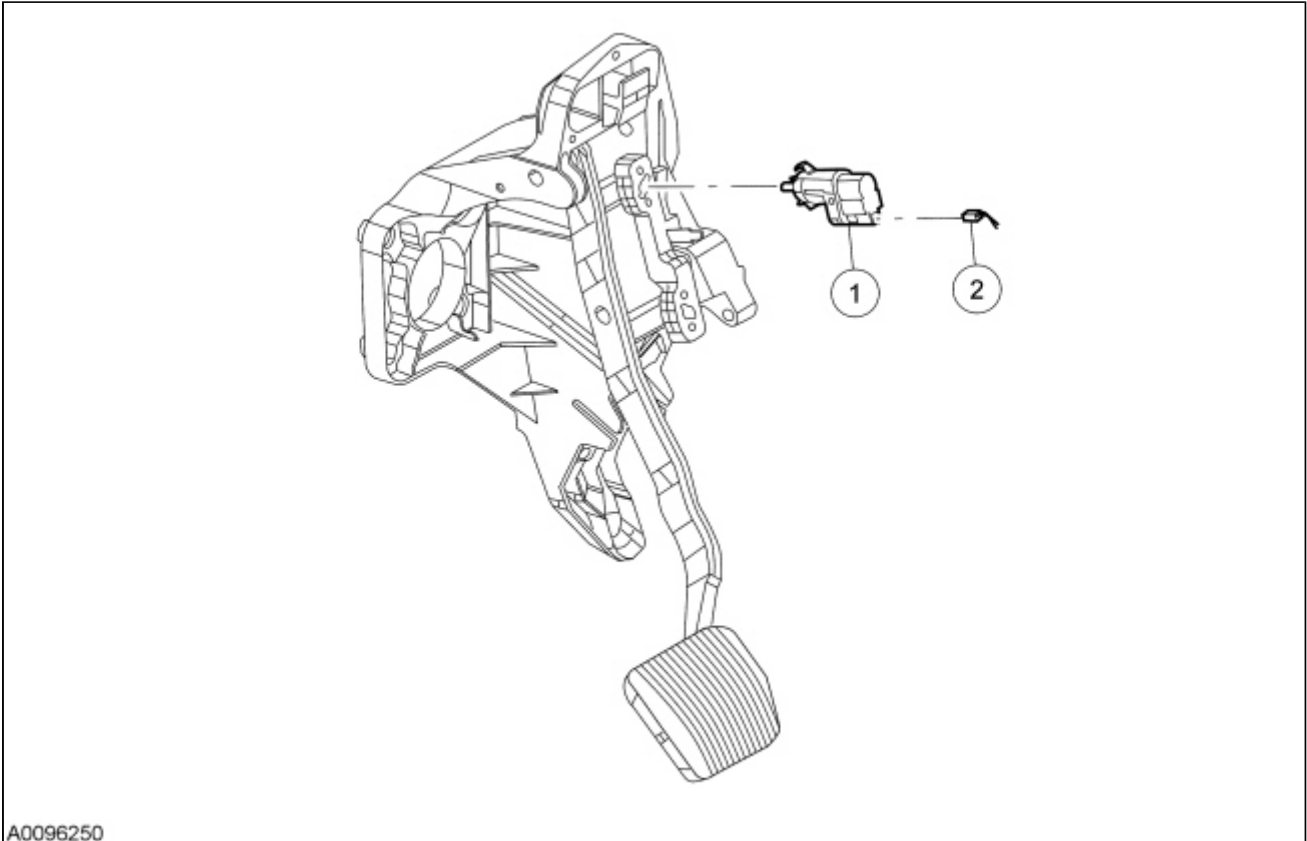


Speed Control Deactivator Switch

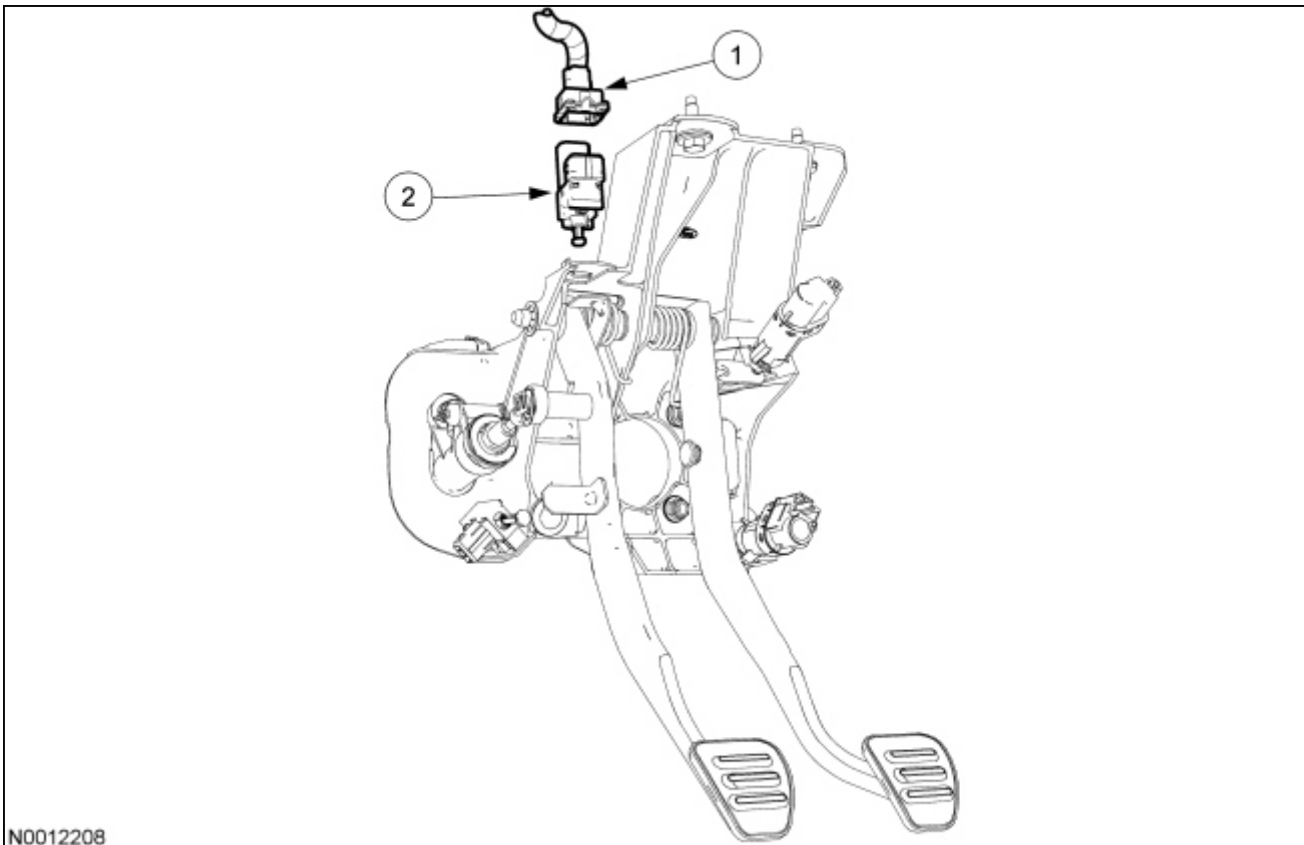
Brake Pedal



A0096250

Item	Part Number	Description
1	9C872	Speed control deactivator switch
2	—	Speed control deactivator switch electrical connector

Clutch Pedal



N0012208

Item	Part Number	Description
1	—	Speed control deactivator switch electrical connector
2	7C534	Speed control deactivator switch

Removal and Installation

NOTICE: Do not press, pull or otherwise move the brake pedal while removing or installing the speed control deactivator switch. The switch must be installed with the booster push rod attached to the brake pedal and with the brake pedal in the at-rest position. Installing the switch with the brake pedal in any other position results in incorrect adjustment and damage to the switch.

NOTE: This procedure is for both speed control deactivator switches.

1. **NOTICE:** The switch plunger must be compressed for the switch to rotate in the bracket. Attempting to remove the switch with the plunger extended (during brake pedal apply) results in damage to the switch.

Remove the speed control deactivator switch.

- Disconnect the electrical connector.
- Rotate the speed control deactivator switch counterclockwise 45 degrees and remove the deactivator switch.

2. **NOTE:** When installing the speed control deactivator switch, it is automatically self-adjusting to the proper position. Do not pull up or push down on the pedal during installation. Initial installation of the speed control deactivator switch allows for one adjustment. If additional adjustments are necessary, install a new switch.

To install, reverse the removal procedure.

